



INTELLIGENT AUTOMATIC

Full height turnstile

Semi auto stainless steel full-height turnstile can achieve maximum access security control. Users are not able to crawl underneath or climb over to gain unauthorized access into premise. Full height turnstile can effective control single pass through each time.

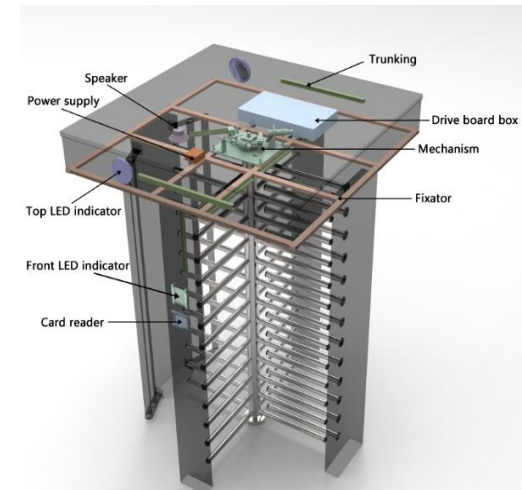
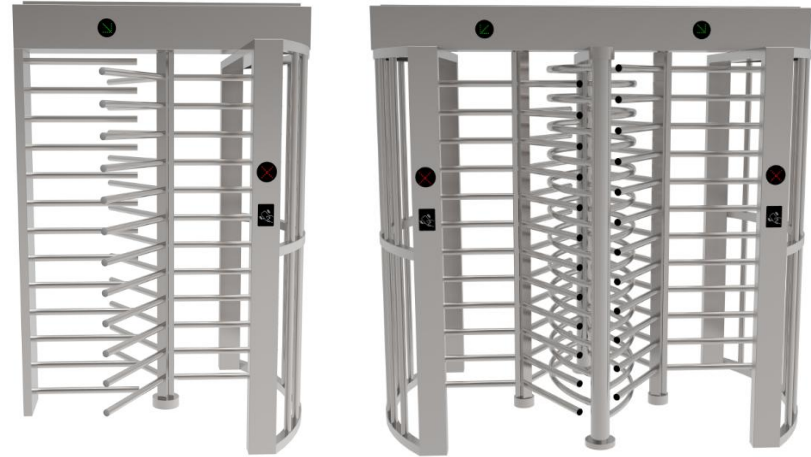
Semi auto turnstile operation is based on solenoid lock that selectively allow or block rotation direction.

Ful height turnstile is built with high quality material to withstand outdoor usage for years to come.

I CHANNEL
INTELLIGENTIZE MANAGEMENT SYSTEM

Model

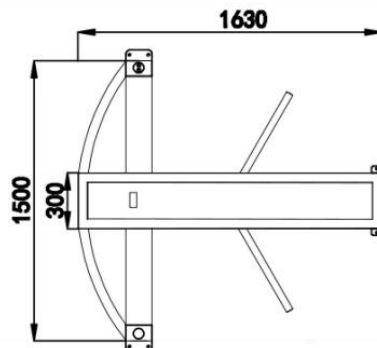
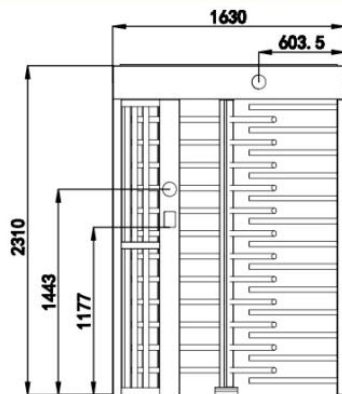
BLS-FH53/FH53D



TECHNICAL SPECIFICATION:

Description	Parameters
Lane Width	550-570mm
IP	IP54
Pass Speed	25-30 persons/min
Power supply	AC220V/110V,50/60Hz
Drive Mode	Motor drive
Max Power Consumption	200W
Opening time	0.6S
Humidity	≤90% coagulation free
Noise	≤50dB
Service Life	5,000,000 cycles
Outside packing	2210x1680x1320mm/2580x1680x1750mm
Working Environment	-20°C~+60°C
Gross Weight	350KGS/600KGS

DIMENSION:



Features:

1 EASY INTEGRATION

Easy integration with any third party access control or ticketing via dry contact interface.

2 MINIMUM MAINTENANCE

The housing is made of high quality stainless steel, and all the internal parts are with antirust and antiseptic treatment to achieve high level of durability.

3 HIGHER SECURITY

Full height turnstile design with high door panel to prevent unauthorized visitor from gaining access by climbing over or crawling under the gate.

4 SELF CENTERING

If arm is rotated more than half, it will automatically fall forward to complete the rotation. If arm is rotated less than half, it will automatically fall backward to return to home position. This will avoid arm does not stop halfway that may allow unauthorized access.

5 ANTI TAILGATING

Smart lock mechanism uses limit switch to detect rotation and effectively re-lock back after arm has been rotated more than half. Therefore current user can only finish the rotation to pass through or reverse the rotation to exit. Either way, it will not allow second person to pass through again.

6 EMERGENCY RECOVER

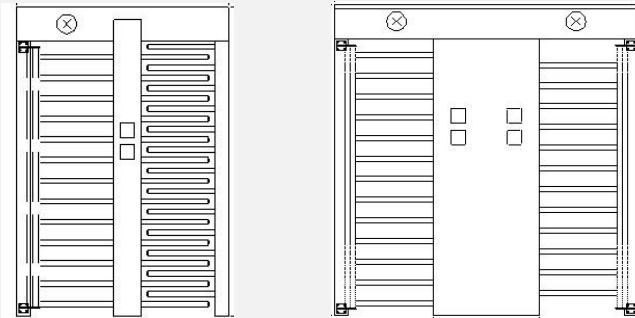
During power failure, door panel will open automatically to allow free pass through. In the event of emergency such as fire alarm, sliding barrier can be manually trigger to open permanently to allow fast evacuation.

Full height turnstile

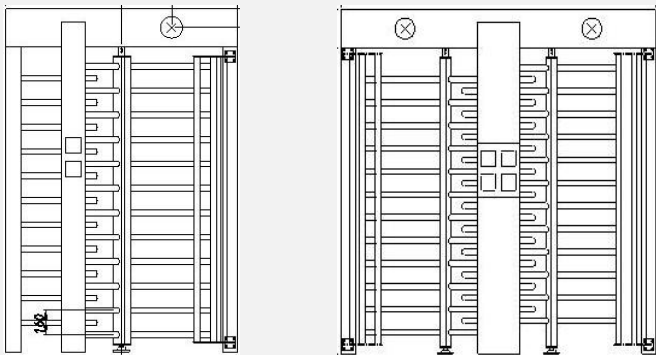
Different type

Basis on the quantity of channel it can be divided into single channel full height turnstile and double channel full height turnstile. Basis on the rotation railings degrees can be divided into 90° full height turnstile and 120° full height turnstile

90° full height turnstile(single and double channel):



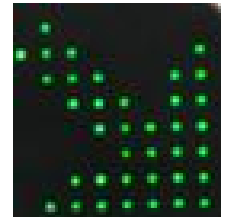
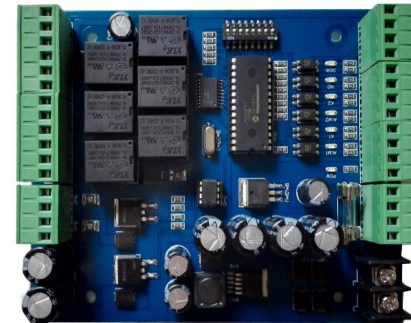
120° full height turnstile(single and double channel):



Mechanism&drive board

Heavy-duty design for 24 hours continuous application, 3 million times or above test.
High durability with industrial parts.
Running is quiet without any noise & shock.

Self designed drive board adopts original Mitsubishi drive module.
Capatitable with 3A-15A current.
Over heat and overload dual protection.



Status And Direction Light Indication

Green Arrow indicates that the turnstile is unlock to permit a passage and shows the direction of authorized passage;

Red Cross indicates that passage is not allowed and shows that the turnstile remains in locked status.

Control Over Turnstile

From the remote control panel or a wireless remote control(in the pulse control mode).

From access control system via a controller (in either pulse or potential control mode).

The turnstile is a normally closed unit(N/C),it is remains unlocked until it receives a valid authorization or is unlocked with a mechanical release key.

If integrated into a fire alarm system,the turnstile can also be automatically unlocked by fire alarm signal.

Operating Modes

Single passage in the set direction(the turnstile is open for one passage in the permitted direction and closed in the opposite direction).

Bi-directional single passage(the turnstile is open for one passage in each direction).

Free passage in the set direction(the turnstile is open for multiple passages in the permitted direction and closed in the opposite direction).

Free passage in the one direction,single passage in the opposite direction(the turnstile is open for multiple passages in the permitted direction and one passage in the opposite direction).

Always free(the turnstile is open for entry and exit).

Always locked(the turnstile is closed for entry and exit).

Housing Optional BLS-FH58



1630x1500x2310mm

BLS-FH58D



2400x1500x2310mm

Materials

Turnstile Housing: high quality powder coating steel or stainless steel

Hub : mild steel

Barrier arms : polished SUS 304 stainless steel tube (38mm)/
Colorful powdered Steel

Timeout Facility

The turnstile has a preset timeout period(the passage waiting time) when the turnstile is unlocked to allow a passage in the permitted direction.

A timed auto re-lock if the passage has not begun (if not rotated) over this period is a standard feature.

The passage waiting time in the pulse control mode is 5 seconds regardless of the control signal duration. In the potential mode the passage waiting time is equal to the control signal duration.

Interface

“ Fire Alarm ” control input to unlock the turnstile when an appropriate signal is received from fire alarm system or emergency button.

Relay outputs to connect remote light indicators, an intrusion detector, a siren and an emergency unlocking device.

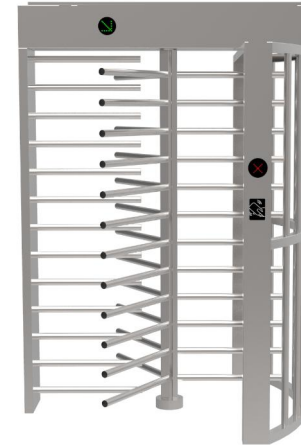
Galvanic decoupling of the outputs to ensure noise-immunity of the turnstile electronic.

The logic is protected against short circuits, overloads and polarity inversion.

Warranty

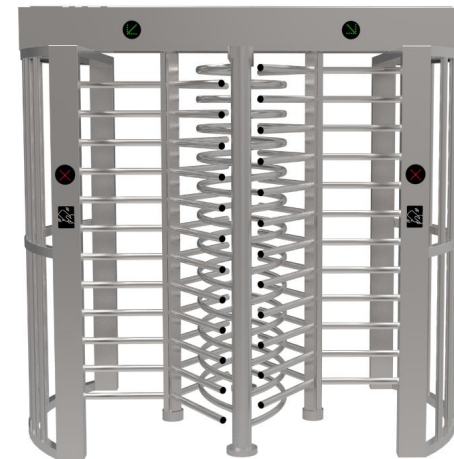
The warranty period is 12 months commencing from the date of sale.

Housing Optional BLS-FH53



1630x1500x2310mm

BLS-FH53D



2400x1500x2310mm